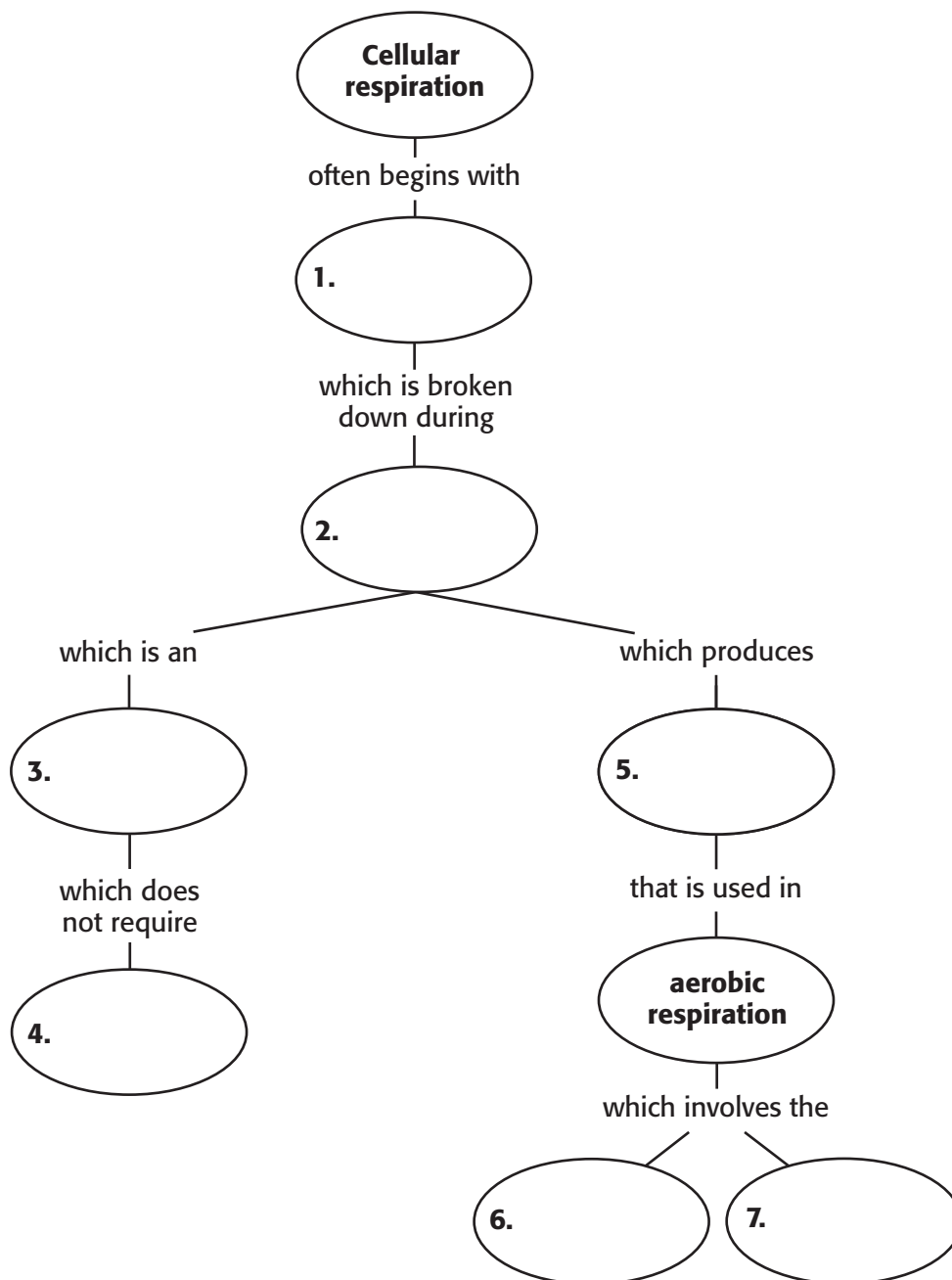


Use the following terms and phrases to complete the concept map below.

- anaerobic process                      glycolysis                      oxygen
- electron transport chain              Krebs cycle                      pyruvic acid
- glucose



**ANSWER KEY**

anaerobic process                      glycolysis                      oxygen  
 electron transport chain            Krebs cycle                    pyruvic acid  
 glucose

